

Actionable Reporting

Providing valid data to inform educational decision making

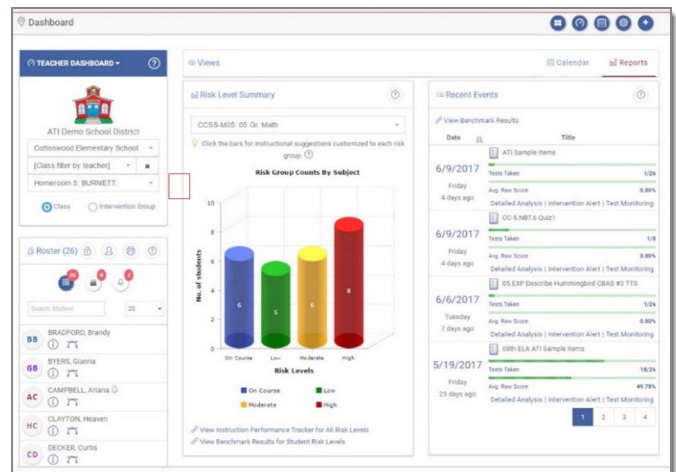


Obtain actionable, real-time data on student learning with Galileo® K-12 Online reports. Reliable and valid assessment results from district-wide benchmark, pretests and posttests, end-of-course, computer adaptive, formative, and an array of other Galileo assessments are rapidly available to teachers, administrators, specialists, and parents. Report data details student mastery of standards, next steps to design instruction to promote learning with continuous tracking of student progress, and forecasting of student performance throughout the year.

POWERFUL RESEARCH-BASED REPORTING

Galileo reports transform high-powered data analysis procedures such as IRT and test scaling procedures, into practical, interactive reports. IRT makes it possible for Galileo to:

- place scores from multiple assessments over the course of the year on a common scale to accurately measure student growth
- forecast student performance on state-wide tests based on periodic district-wide assessments
- produce categorical growth analyses indicating whether students have maintained, exceeded or not maintained expected growth
- place the student on a developmental path and provide teachers with easy-to-use graphical reports with student mastery data



TEACHER DASHBOARD The go-to page for planning instruction, assessing students, & analyzing student progress.

EASE-OF-USE DASHBOARD REPORTING

The Galileo *Teacher Dashboard*, the *Admin Dashboard*, and the *K-12 Student-Parent Center* promote instructional improvement and improved student learning through:

- a central location where educators can access real-time, multi-level graphical reports directly aligned to instructional activities
- reports that provide information about student learning, standards mastery, growth, and achievement
- reports that facilitate the design of differentiated instruction

INFORMATIVE REPORTING FOR DIFFERENTIATED INSTRUCTION

Access data gathered and reported through Galileo that supports multiple types of differentiated instruction, essential in implementing instruction aligned to state and/or local standards. Galileo supports item-level differentiated instruction, risk-level differentiated instruction based on IRT data analysis, and differentiated instruction based on growth patterns.

CUSTOMIZED REPORTS
Report Builder is a point-and-click interface that allows the user to build search terms for a customized report.

Step 1: Select Data

Select Formula Type [Select a formula type]

Select Form Type [Select a form type]

Add Selected Item To Formula Insert Item At Selected List Position (as opposed to inserting the selected item at the bottom of the list)

If you need to add a mathematical operator to your formula select it here. If not, leave this box empty.

Select Math Operator [Select an operator]

Add Math Operator To Formula

If you want to manually add a selection or criteria item, enter it here. If you want to add both a text description and a value, separate them with ":" (text:value).

Type The Value To Add

Add Text To Formula

Check Syntax

Selected Items

```
select
Student.[Last Name]
Student.[First Name]
Student.[Student ID]
Where
Student.[Ethnicity] = Hispanic/Latino
And
Student.[Home Language] = Spanish
```

Delete Selected Item Clear List

Galileo® K-12 Online

Galileo K-12 provides a wide variety of easily accessible reports that can be printed or viewed online. They're available as part of the *Dashboard* technology, in the reports section of Galileo K-12, in the K-12 *Student-Parent Center*, and in other selected locations designed to provide actionable information. Reports are available at the individual student, teacher, grade, intervention group, school, and district levels.

HIGHLIGHTED MULTI-LEVEL GALILEO REPORTS

STANDARDS-BASED	DEVELOPMENT PROFILE Provides the number or percent of each students at each achievement level for the selected assessments. Can be run at the individual or class level.	INTERVENTION ALERT Illustrates the percentage of students who mastered each standard on an assessment along with links to follow-up assignments and quizzes. Can be run at the group or individual level.	DEVELOPMENT PROFILE CLASS DEV. PROFILE INDIVIDUAL DEV. PROFILE Provides the number or percent of each students at each achievement level for the selected assessments.	
	AGGREGATE MULTI-TEST WITH PERFORMANCE LEVELS OR RISK LEVELS Illustrates progress for a group of students as reflected in performance across a series of district-wide assessments that have been placed on a common scale.	STUDENT GROWTH & ACHIEVEMENT Cross-classifies students into groups based on their growth between two district-wide assessments and their achievement on the second assessment.	BENCHMARK RESULTS* BENCHMARK RESULTS BY GROUP** Provides teachers with results for each student in a class on each district-wide assessment. Provides the percentage of students in each subgroup who passed each district-wide assessment.	STUDENT MULTI-TEST WITH PERFORMANCE LEVELS OR RISK LEVELS Illustrates progress for an individual student as reflected in performance across a series of district-wide assessments that have been placed on a common scale.
	STUDENT BENCHMARK PROFILE Provides customized standards-based intervention recommendations for an individual student to reduce risk of not passing the statewide test.	CUSTOM TEST REPORTS Provides a customized export that can include enrollment information, scheduling information, multiple measures of Galileo assessment performance, and other external data uploaded into Galileo forms.	TEST BLUE PRINT Summarizes the concepts and standards included on an assessment along with information about the items that assess each standard.	RISK LEVEL SUMMARY Provides the count of students at various levels of risk of not passing the statewide test with links to recommendations for standards to target in interventions designed to reduce student risk.
ADMINISTRATORS	TEST ACTIVITY Monitor the implementation of scheduled assessments.	TEST MONITORING Enables users to monitor student progress in real-time for an online test, supports manual scoring of open response items, and illustrates performance on each item and the test as a whole.	ITEM PARAMETERS Provides the Item Response Theory item parameter estimates (discrimination, difficulty, and guessing) for each item on a district-wide assessment as well as the reliability.	
	CLASS TEST SCORES BY GRID/BY LIST Provides multiple views illustrating the average class score along with the points earned and percent correct for each student, for each item, and for the test as a whole.	DETAILED ITEM ANALYSIS Provides the percentage of students who correctly answered each item, a breakdown of student responses for each answer choice and the breakdown of student responses by percentile rank.	BENCHMARK PERFORMANCE LEVELS Provides teachers with results for each student in a class on each district-wide assessment.	ASSESSMENT HISTORY Provides an individual student's performance on all assessments and across multiple years in one location.
TEACHERS				

KEY

- Reports designed for administrators
- Reports designed for teachers
- District-wide assessments
- School/classroom assessments
- Reports that take advantage of IRT

Visit ati-online.com to learn more or contact us:

1.800.367.4762
GalileoInfo@ati-online.com

Find us:
facebook.com/AssessmentTechnologyIncorporated
youtube.com/AssessmentTechnology
townhallblog.ati-online.com